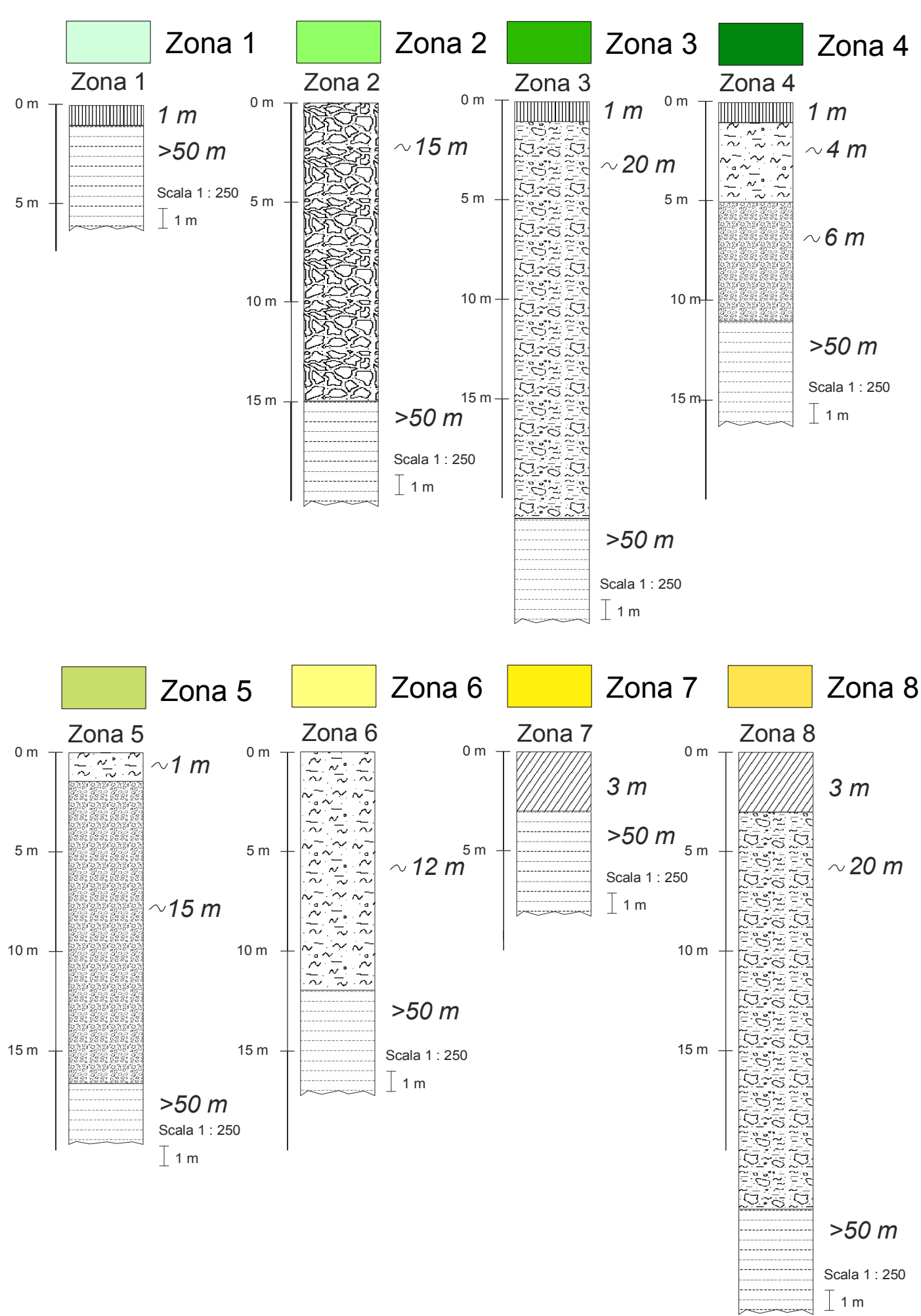


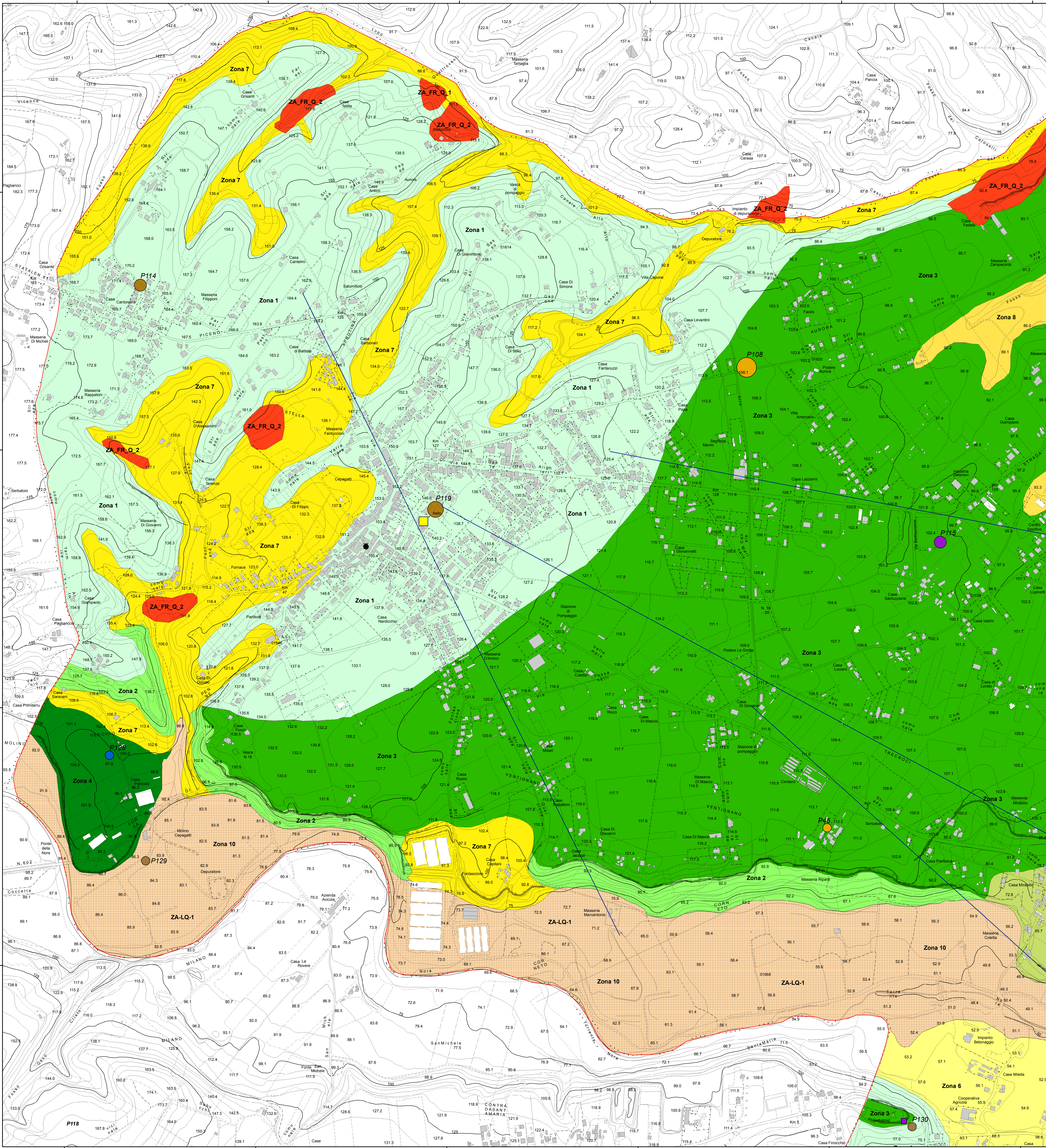
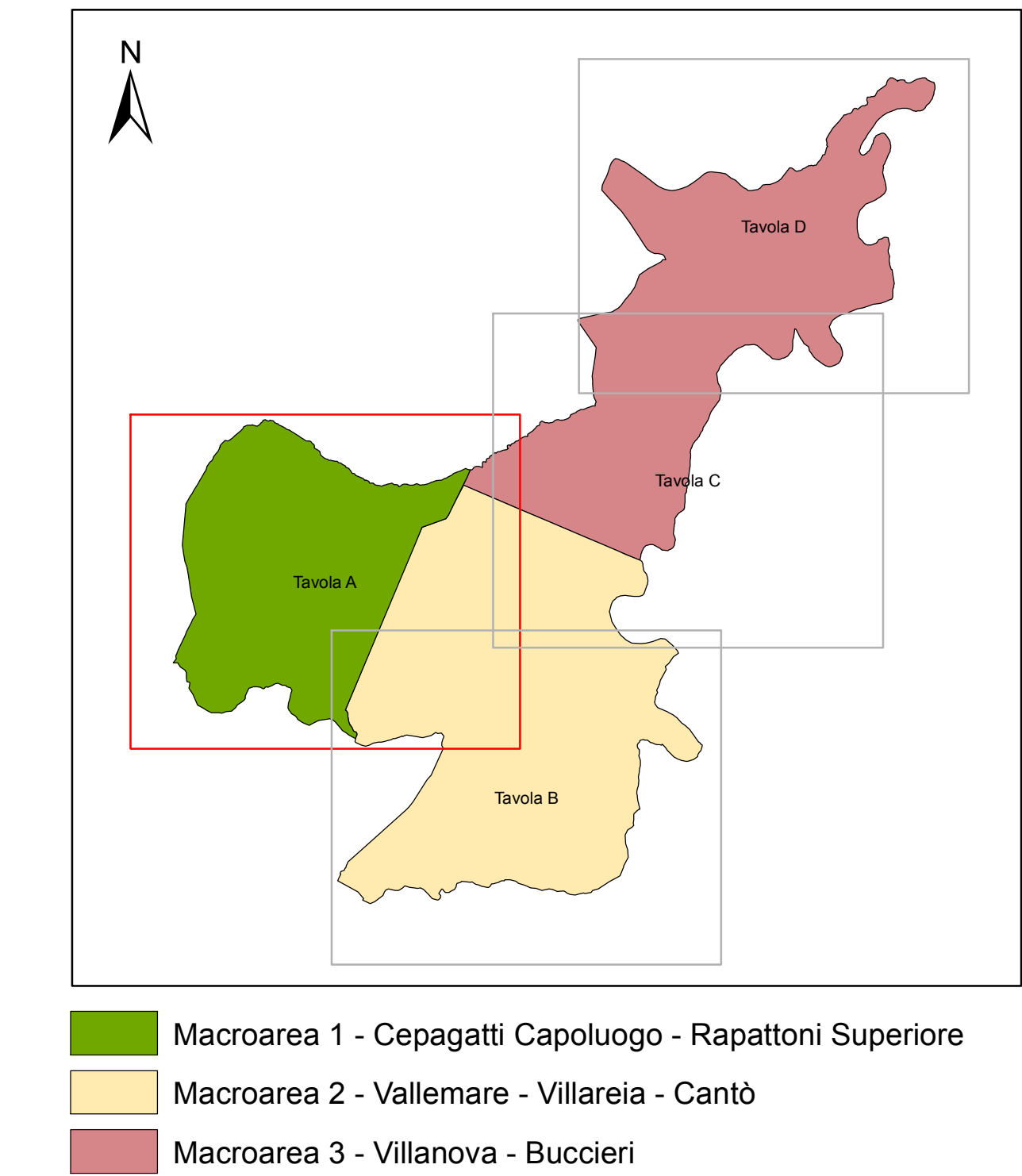
Tecnico incaricato: Geol. - Sandro Pozzi
Data
Collaboratore: Geol. - Marco Petaccia

Legenda

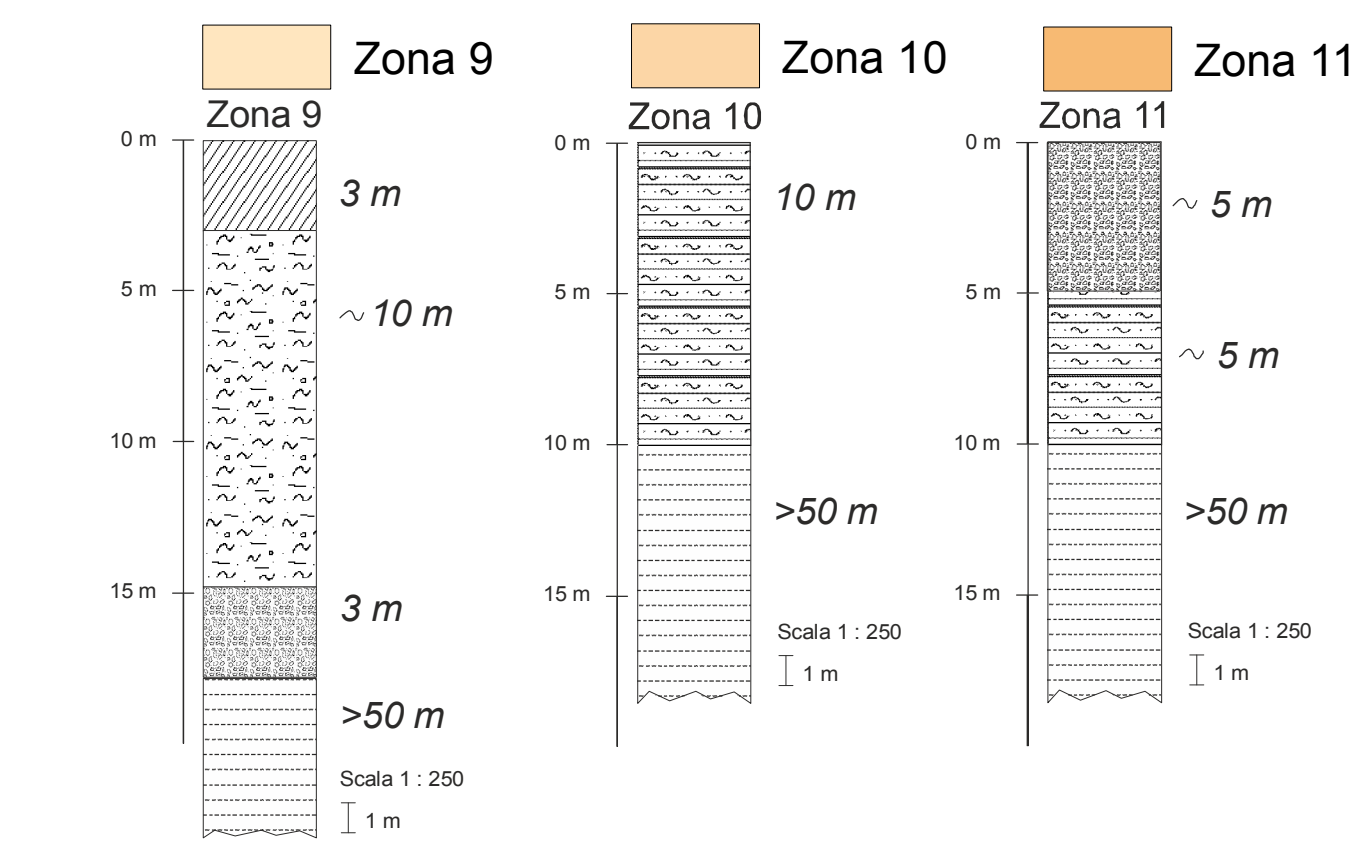
ZONE STABILI SUSCETTIBILI DI AMPLIFICAZIONI LOCALI



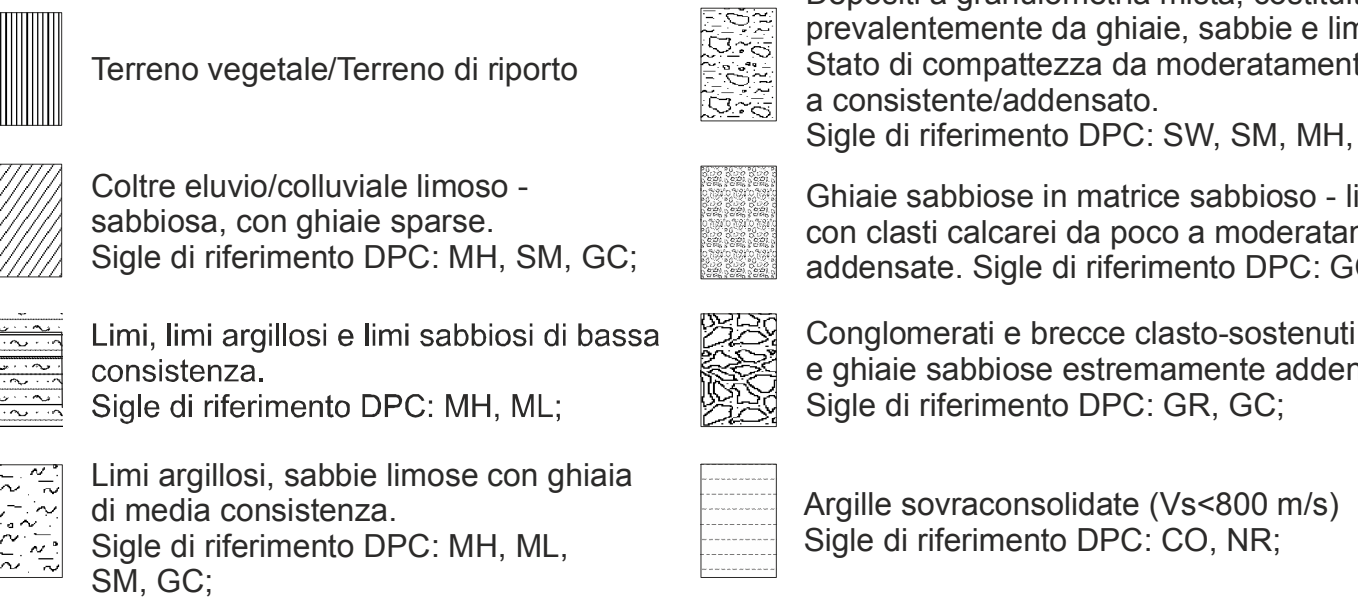
Zonizzazione del territorio comunale e Quadro d'Unione



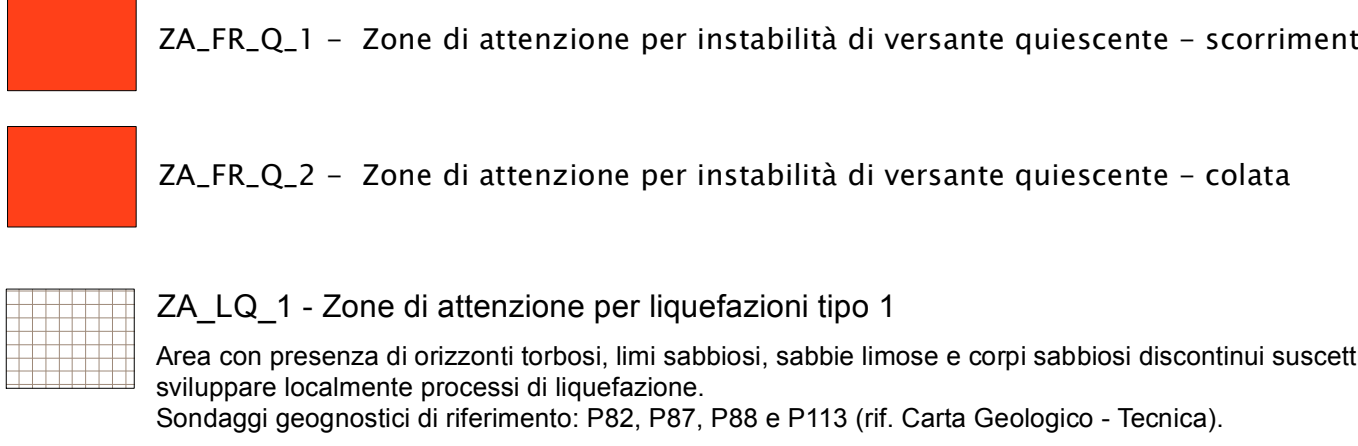
ZONE STABILI SUSCETTIBILI DI AMPLIFICAZIONI LOCALI



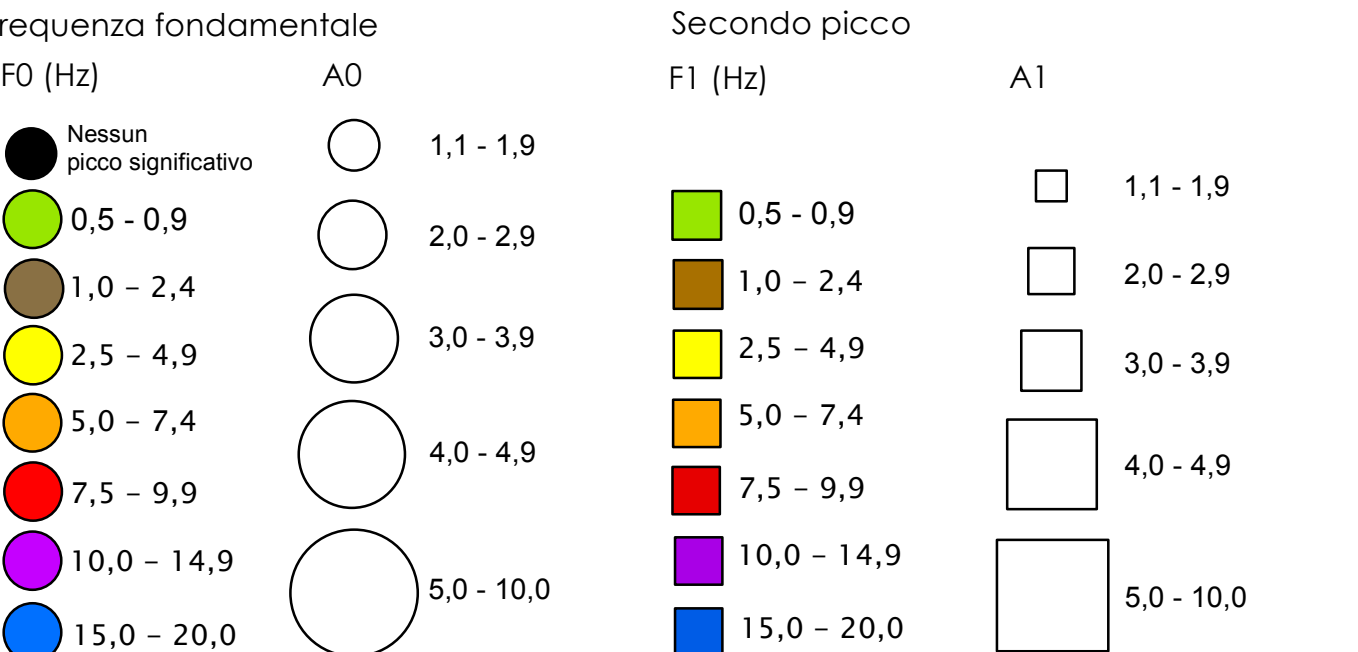
Legenda dei simboli



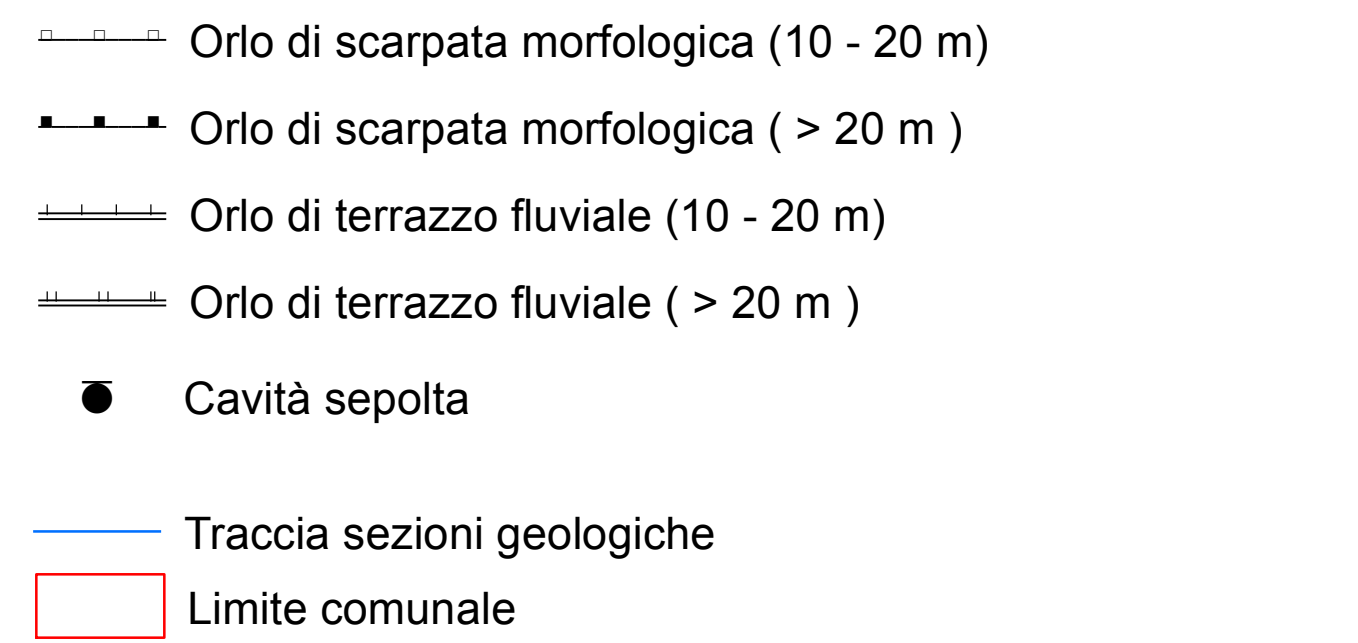
ZONE DI ATTENZIONE PER LE INSTABILITA'



LEGENDA DELLE FREQUENZE DI RISONANZA



Forme di superficie e sepolte



Curve HVSR

